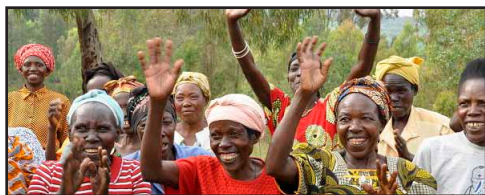


PASSIONIST

## AFRICA STUDENT FUND — INTERNATIONAL TRAVEL PROGRAM

1924 NEWBURG ROAD • LOUISVILLE, KY 40205 • 502.451.2330 • WWW.AFRICASTUDENTFUND.NET



## Since 2014 JOURNEY TO AFRICA

AN IMMERSION EXPERIENCE



### KENYA AND TANZANIA



THE LAND, THE PEOPLE, THE CULTURE

## JUNE 3-21, 2026 — NORTHERN ROUTE

Kenya and Tanzania are the Africa you have always dreamed of – a land of vast savannahs, stirring landscapes, abundant wildlife, snow-capped Mount Kilimanjaro, and vibrant cultures rooted in ancient traditions. This is the soil where human life began.

The Africa Student Fund in collaboration with the Passionist International Travel Program sponsors two annual immersion journeys to East Africa: June 3–21, 2026 and January 6–24, 2027.

### The Experience

We will experience Kenya's dynamic capital city, Nairobi, and travel to the remote forest region of western Kenya. Our journey includes an overnight stay on Lake Victoria, exploration of the birthplace of humanity, and time with members of the renowned Maasai community. We will safari in world-class game parks and build relationships with grassroots community leaders committed to addressing the profound challenges of poverty in the region.

Throughout the journey, we will foster a network of mutual support, deepen our global awareness, and reflect on what it means to be responsible global citizens.

**This immersion experience into Africa is a remarkable opportunity to make your world bigger!**

### The Journey

- This is not a typical tour. While we will visit game parks and encounter abundant wildlife, the focus is on experiencing the vitality and daily life of Africa from within. This journey is for those who want to step off the beaten path, engage with local communities, and encounter another way of seeing the world.
- Participants must be able to climb at least two flights of stairs and walk up to one mile. Accommodations will be simple, clean, and safe. This journey is not intended for those expecting four-star hotels.
- Travel within Kenya and Tanzania will be by bus, with African Passionists serving as local guides.
- The journey will be led by Fr. Joe Mitchell, together with priests and brothers from the Passionist communities of Kenya and Tanzania.
- Registration is limited to 18 participants.

### \$3300 Cost and Payment Schedule for 19 Days

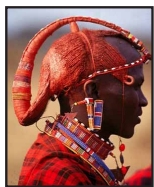
- Cost includes double-occupancy accommodations, meals, all ground transportation within Africa, services of local guides, stipend for Passionist communities, game park and all other entry fees.
- Cost does not include international airline travel.
- Cost does not include tips, alcoholic beverages, camera fees, any optional services, or expenses of personal nature such as laundry, phone calls, etc.
- \$700 initial deposit is due upon registration to reserve a place on the Journey to Africa.
- \$1,300 (50% balance) due by February 15, 2026.
- \$1,300 remaining balance due by March 15, 2026.

### International Travel

- Each participant is responsible for arranging and paying for their own international airfare, arriving in and departing from Nairobi (Jomo Kenyatta International Airport).
- Single-entry tourist visas are required for travel to both Kenya and Tanzania.
- Certain immunizations are recommended. Consult your healthcare provider for guidance.

### Cancellation

- Before January 1, 2026: all payments are refundable except for a \$100 processing fee.
- January 1-February 28, 2026: 60% of the full payment is refundable.
- March 1-April 15, 2026: 40% of the full payment is refundable.
- After April 15, 2026: No refund is possible unless your place can be filled by another participant.



## Africa Journey – Summer 2026 Itinerary \*

June 3–21, 2026 | 19 Days

### • Day 1 – Depart for East Africa on Wednesday, June 3, 2026

### • Day 2 – Evening Arrival in Nairobi, Thursday, June 4, 2026

Arriving at Jomo Kenyatta International Airport, we will be warmly welcomed by our Kenyan hosts – Fr. Jacob Oyugi, CP and Peter Mutinda, our phenomenal driver – with the Swahili greeting karibu (“welcome”). They will accompany us on this journey into the heart of Africa. Overnight at the Passionist Retreat Center, Nairobi. (Most international flights arrive late in the evening.)

### • Day 3 – Welcome to Kenya

We settle into the Passionist Retreat Center in Karen–Langata, a tranquil area on the outskirts of Nairobi. The morning is reserved for rest and recovery after travel. In the afternoon, we explore the neighborhood, visiting a nearby school and local craft center. A relaxed day to acclimate and settle in.

### • Day 4 – Nairobi City

Nairobi, Kenya’s capital, is a vibrant blend of cultures and styles and serves as East Africa’s commercial hub, hosting many United Nations offices. Morning visits include downtown Nairobi and the Kenya National Museum. In the afternoon, we visit the nearby Giraffe Centre. Overnight at the Passionist Retreat Center.

### • Day 5 – Kibera and Kenyan Culture

We meet grassroots leaders working in Kibera, one of Africa’s largest informal settlements, home to nearly a million people in one square mile—more than half of them children under the age of twelve. We listen to their stories and meet local residents. In the afternoon, a lecture on Kenyan culture and history deepens our understanding. Overnight at the Passionist Retreat Center.

### • Day 6 – Lake Nakuru National Park or Crescent Island

We travel through the dramatic landscapes of the Great Rift Valley toward Molo, a farming community in Kenya’s central highlands. En route, we visit either Lake Nakuru National Park or Crescent Island Game Sanctuary at Lake Naivasha, depending on optimal wildlife viewing. Overnight at a retreat center in Molo.

### • Day 7 – From Molo to Lake Victoria



Our drive from Molo to Karungu offers expansive vistas and lush agricultural landscapes. We pass through the rolling hills and manicured tea fields of central Kenya, with a visit to a tea plantation in Kericho. Overnight at the Passionist Retreat Center in Karungu.

### • Day 8 – Karungu

Our home base is the Passionist Retreat Center, beautifully situated on the sloping shore of Lake Victoria, the legendary source of the Nile and a cradle of early human evolution. Exotic birds fill the air in this garden setting and unique ecosystem. We visit St. Camillus Mission Hospital, St. Teresa School for the Deaf, and Orphanage. Overnight at the Passionist Retreat Center.

### • Day 9 – Karungu and Tonga Village

Kenya is home to 42 ethnic tribes, each with its own language, customs, and traditions. Karungu lies within the territory of the Luo tribe, Kenya’s third-largest ethnic group. We visit the remote village of Tonga, experiencing local hospitality and learning about village life in this secluded tropical region.

\* Unanticipated itinerary changes may be necessary due to local circumstances or needs.

.....**REGISTER ONLINE AT [WWW.AFRICASTUDENTFUND.NET](http://WWW.AFRICASTUDENTFUND.NET) OR USE THIS FORM**.....

☐ Yes, I would like to submit a request to participate in the *Journey to Africa* – June 3-21, 2026.

Name \_\_\_\_\_

Address \_\_\_\_\_

City/State/Zip \_\_\_\_\_

Email \_\_\_\_\_

Primary Phone \_\_\_\_\_

### • Day 10 – Central Highlands

We drive back to Nairobi through the luminous green highlands. Lunch is shared with the Passionist community in Sotik. It is a full day of travel crossing the Great Rift Valley, ending with an overnight at the Passionist Retreat Center in Nairobi.

### • Day 11 – Nairobi

A restful day at the retreat center to relax and recharge. Optional activities include visits to the Karen Blixen Museum, Bomas of Kenya Cultural Center, or simply enjoying the grounds. Overnight at the Passionist Retreat Center.

### • Day 12 – Border Crossing: Kenya to Tanzania

We travel south from Nairobi into Tanzania. On clear days, Mount Kilimanjaro dominates the horizon. After crossing the international border, we arrive in Arusha, the gateway to Tanzania’s northern safari circuit. Nestled below Mount Meru, Arusha enjoys a mild climate year-round. Overnight at the Passionist Residence in Arusha.

### • Day 13 – Tanzanian Culture and Karatu

The morning includes an introduction to Tanzanian culture and history, the cradle of human evolution. After lunch, we drive toward Karatu, traveling through the Rift Valley and climbing into the lush green fields on the southeastern slopes of the Ngorongoro Crater, approximately 7,500 feet above sea level. Overnight at a guesthouse in the mountains of central Tanzania, set amid a coffee plantation outside Karatu.



### • Day 14 – Ngorongoro Conservation Area

Often called “Africa’s Garden of Eden,” the Ngorongoro Crater is a highlight for visitors to Tanzania. Inside the crater, herds of zebra and wildebeest roam freely, while lions lurk nearby. At dawn, the endangered black rhino may be seen grazing in the mist. After a full day of safari, we return to our guesthouse in Karatu.

### • Day 15 – Tarangire National Game Park

Today’s highlight is Tarangire National Park, known for its vast elephant herds and iconic baobab trees. The park supports diverse wildlife, including impalas, wildebeest, zebras, giraffes, baboons, and even tree-climbing leopards. Return to the Passionist Residence in Arusha.

### • Day 16 – Arusha Humanitarian Programs

We begin the day at the Maasai Market for shopping and cultural engagement. We then visit local humanitarian programs, which may include: Food Water Shelter (health center and orphanage), Zahanati Health Clinic (AIDS outreach and nutrition programs), Sunflag Textile Factory (the story behind our cotton clothing). Overnight at the Passionist Residence in Arusha.

### • Day 17 – Drive from Arusha to Nairobi

We return to Kenya and our home base at the Passionist Retreat Center in Nairobi. A festive farewell meal celebrates our African journey.

### • Day 18 – Evening Departure from Nairobi: Saturday, June 20, 2026

Enjoy a free morning at your own pace – perhaps a market visit, the Karen Blixen Museum, Langata Botanical Gardens, or Bomas of Kenya. In the evening, we bid farewell to Africa and begin our journey home.

### • Day 19 – Arrive Home: Sunday, June 21, 2026

This may be the end of the trip – but it is also the beginning of your personal journey to carry your experience forward into daily life.

## Registration Options



- Make registration online at [www.africastudentfund.net](http://www.africastudentfund.net) and include \$700 deposit payment by credit card.
- Complete and mail in this form below, including a check OR your credit card information.
- Questions: call 502.451.2330 and ask for Fr. Joe Mitchell

☐ \$700 payment for registration deposit fee is included.

☐ Charge my credit card for the \$700 registration deposit fee.

Cardholder Name \_\_\_\_\_

Card Number \_\_\_\_\_

Expiration Date \_\_\_\_\_ CVV \_\_\_\_\_ Billing Zip/Postal Code \_\_\_\_\_

Enclose \$700 deposit to request registration for the June 2026 African Journey. Make checks payable to “Africa Student Fund” with notation “June 2026 Journey”.

This journey usually fills up to capacity. If your registration cannot be completed, you will receive a full refund.

MAIL TO: Africa Student Fund • c/o Passionist International Travel Program • 1924 Newburg Road • Louisville, KY 40205 • 502.451.2330